

INNOVATION LEADS TO VALUE



SUNWARD

# SWE155FW MEDIUM-EXCAVATOR

◆ Total weight: 32,480~33,951 lb (14.7~ 15.4t)    Engine power:156HP/115kW@2200rpm



◆ Equipped with Cummins Euro 5 high-power engine; the latest DC air filter with long warranty period; radiator area increased by 5%, and fan diameter increased by 9%, to solve the high-temperature hazards.

Three-section arm for larger working range; 7 lines are installed as standard for multifunctional auxiliaries.

◆ Positive flow control system is used with faster action response and lower energy consumption.

High-strength trapezoidal undercarriage is used with higher carrying capacity.

Push shovel is installed as standard with optional legs. Vehicle bottom sealing plate is installed as standard to protect hydraulic pipeline.

The volume of the fuel tank is 320L, reducing refueling frequency and improving operation efficiency.

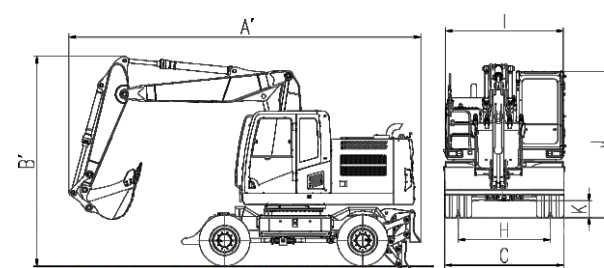
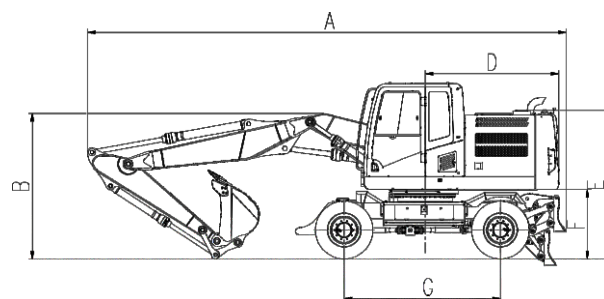
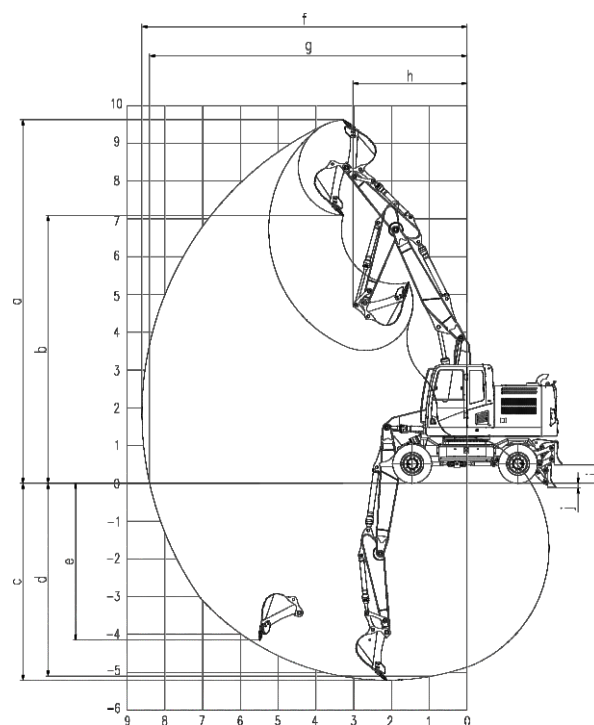


## Parameters and performance of the main machine

Weight of whole machine	lb/ton	32,408~33,951 / 14.7-15.4
Standard bucket capacity	yd³/ m³	0.78 / 0.6
Digging force of bucket	lbf/ kN	22,548 / 100.3
Digging force of arm	lbf/ kN	18,906 / 84.1
Max. traction	lbf/ kN	17,085 / 76
Traveling speed	mile/h( km/h)	19.9 (32)
Gradeability	°	30
Ground pressure	psi/ kPa	72 / 496.8
Slewing speed	rpm	12
Engine	Brand	CUMMINS
	Model	QSF3.8
	Type	4-stroke water cooling supercharging
	Displacement	in³ / L 231.9 / 3.8
	Power/rpm	HP/kW@rpm 156/115 @2200
Fuel tank capacity	Gal/L	84.5 / 320
Primary pump	Type	2 x piston variable pump
	Flow rate	Gal/min(L/min) 95.1 ( 360)
Pressure of main relief valve	psi(MPa)	4,554/4,974 (31.4/34.3)
Hydraulic oil tank capacity	Gal/L	48.9 / 185

## Working range

	Boom length	in / mm	79+131 / 2010+3340
	Arm length	in / mm	82.6 / 2100
a	Max. digging height	in / mm	378 / 9623
b	Max.dumping height	in / mm	279 / 7090
c	Max. digging depth	in / mm	205 / 5211
d	Digging depth (2.44m horizontal)	in / mm	200 / 5099
e	Max. vertical digging depth	in / mm	163 / 4144
f	Max. digging reach	in / mm	338 / 8608
g	Max. digging reach at ground level	in / mm	330 / 8404
h	Min. front swing radius	in / mm	119 / 3022
i	Max. lifting height of dozer blade	in / mm	19 / 482
j	Max. digging depth of dozer blade	in / mm	4.7 / 119



## Outline dimension

A	Overall Length(Transport)	in / mm	338 / 8585	F	Counterweight Ground Clearance	in / mm	49 / 1248
A´	Overall Length(Travel)	in / mm	281 / 7144	G	Wheel Base	in / mm	110 / 2800
B	Height of Work Equipment(Transport)	in / mm	102 / 2604	H	Track	in / mm	76 / 1942
B´	Height of Work Equipment(Travel)	in / mm	167 / 4250	I	Turntable Width	in / mm	98 / 2487
C	Overall Width	in / mm	99 / 2513	J	Cab Height	in / mm	124 / 3152
D	Tail Swing Radius	in / mm	94 / 2400	K	Min. Ground Clearance	in / mm	14 / 367
E	Height of Machine Hood	in / mm	104 / 2659				

★ The above parameters may be different due to product upgrading.

## SUNWARD AMERICA CORP

Add: 2710 Geesling Road, Denton, TX 76208  
Phone : 469-353-6890

E-mail: [contact@sunwardamerica.com](mailto:contact@sunwardamerica.com) Web: [www.sunwardamerica.com](http://www.sunwardamerica.com)

